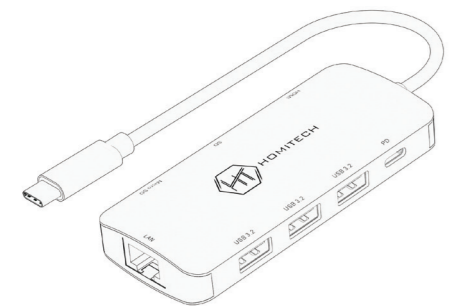




HOMITECH

### User manual Multiport adapter USB-C 8-in-1

HHU800 - USB-C HUB 8in1



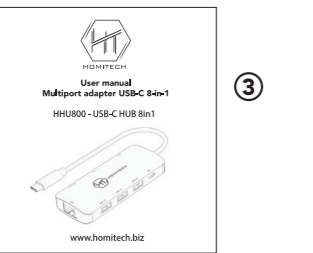
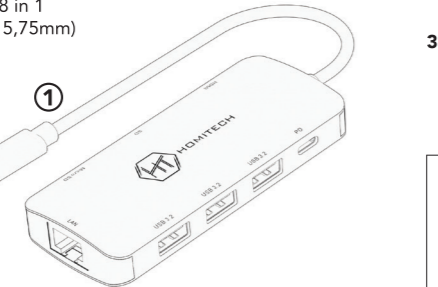
www.homitech.biz

### THANK YOU!

Thank you for choosing Homitech! Please read carefully this user manual and keep it for future reference.

#### THE PACKAGE CONTAINS:

- ① 1 Multiport adapter USB-C 8 in 1 (dimensions 101,35\*43,20\*15,75mm)
- ② 1 Cable clips
- ③ 1 User manual



### HOW TO START

- 1) Connect the hub to a USB-C port on the laptop / tablet / smartphone (figure 1)
- 2) Connect the power supply (supplied with the laptop) to a wall socket and insert the USB-C cable of the power supply into the PD input of the hub (figure 2)
- 3) Connect memory cards, USB-A devices (such as mouse, keyboard, flash drive, webcam, etc ...), HDMI display, network cable, and choosen card (Micro SD or SD) (figure 3)

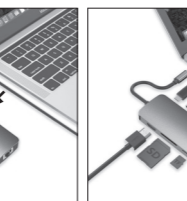
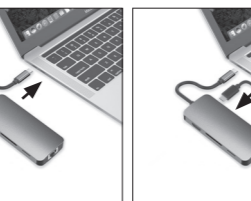
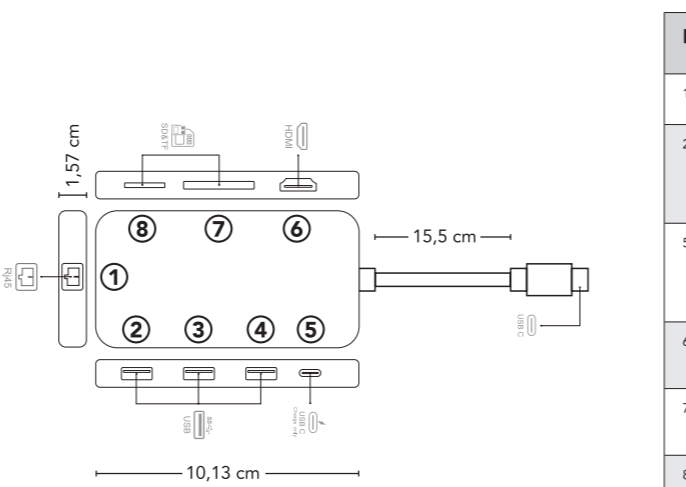


Figure 1

Figure 2

Figure 3

### CONNECTIONS



### FEATURES

Number	Input name	Device connectable	Features
1	Ethernet RJ45	Ethernet cable, Modem, Router	10/100/1000 Mbps Gigabit Ethernet
2 - 3 - 4	USB 3.2 Type-A	Hard Disk, USB pendrive, Mouse, keyboard, headphone, USB cable, Gamepad	3.2 Gen 2 / 10 Gbps
5	USB Type-C PD Charging	Power charger	Power Delivery 3.0 100 W Super Fast Charging 5 - 20V max 5A / 100 W
6	HDMI 1.4	Monitor, TV, Smart TV, Projector	Ultra-HD/4K@30Hz 3840x2160p 1080P@60Hz
7	SD Card	SDHC/SDXC, SD Cart/RS-MMC/MMC Micro, V3 Series	2.0 High Speed 25 MB/s
8	Micro SD	Micro SD, Micro SDHC, Micro SDXC, V30 Series	2.0 High Speed 25 MB/s

### FEATURES

Model	HHU800
Interface	3 USB data ports 3.2 Gen 2 (USB 3.0) HDMI port USB-C PD port (Power Delivery) RJ45 SD and micro SD card slots
Connector	USB-C
USB-C Input (PD)	DC 5-20V 5A
USB Output	DC 5V 900mA Max
USB data transfer speed	Up to 10 Gbps
HDMI display resolution	Up to 4K@30Hz
SD and micro SD card compatibility	MicroSD, microSDHC, microSDXC, V30 Series, SD, SDHC, SDXC, Cart/RS-MMC/MMC Micro, V3 Series
SD and micro SD card capacity	Up to 2TB
SD card and micro SD transfer data speed	25 MB/s
Cable length	15,5 cm
Material	Aluminium alloy
Dimensions	101,35*43,20*15,75mm
Weight	65,2 gr

### FEATURES

- 1 HDMI Output Port**  
Up to 4K UHD (3840 x 2160 @30Hz), supports 1440p /1080p / 720p / 480p / 360p
- 3 USB-A Port**  
Super Speed USB-A 3.2 Gen2, max data transfer speed 10 Gbps. Power supply up to 4.5 W Max.
- 1 USB-C Female Port 1**  
Charging up to 100W of Power Delivery 3.0 (Only for laptop charging)
- 1 RJ45 Ethernet**  
Max Ethernet Speeds up to 1000Mbps
- 1 Micro SD Port**  
2.0 High Speed (25 MB/s) Support Micro SD, Micro SDHC, SDXC
- 1 SD Card Port**  
2.0 High Speed (25 MB/s) Support SDHC/SDXC, SD Cart/RS-MMC/MMC
- 1 USB-C Male**  
Compatible with Thunderbolt 3/4. Make sure that the host USB-C port on your device complies with the USB 3.0/3.1/3.2 specification

### CARE AND USE OF THE PRODUCT

- Use the original power supply of your laptop to recharge it via the USB-C Power Delivery (PD) input on this hub.
- Before connecting multiple devices to this hub, please connect the power supply of your laptop to the USB-C Power Delivery input (PD) because our HUB may not provide the power necessary.
- It supports a maximum of 2 hard drives connected simultaneously.
- The SD and micro SD card slots cannot be used simultaneously. The host device will recognize the card being used first.
- USB ports are recommended for data transmission and not should be used as the output current unless the computer or HUB is not connected to a power supply.
- The operating temperature is about 45°C, and is managed with of the dissipation fans inside the HUB.

### COMPATIBILITY

Brand	Model
Apple	MacBook 12", MacBook Pro 2016/2017/2018/2019, MacBook Air 2018/2019, iPad Pro2018
Various brands	Chromebook
Nintendo	SWITCH
HUAWEI	Mate30, Mate30 pro, Matebook
Samsung	S10/S9/Note8/Note 9
HP	Spectre Pavilion
Dell	XPS series
Xiaomi	Mi Air

\*Support mobile phones and tablets with DP function Made in China



www.homitech.biz